



TECHNICAL SALES INTERNATIONAL

the next generation of software

CAM-Duct

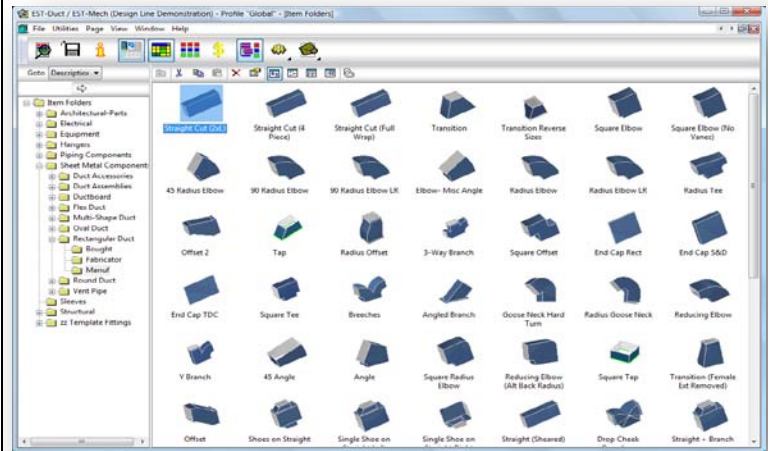
CAM-Duct, the world standard in HVAC CAD-CAM software is a state-of-the-art 32 and 64-bit Windows application using Open-GL technology.

CAM-Duct offers industry leading Fitting Libraries, including comprehensive Rectangular, Round, Oval, Fiber-Board/ Duct board Libraries, Buy-Out Item Libraries and additional Flat Pattern Libraries. The system offers a well founded set of tools and methods for labeling, reporting and deploying of Ductwork Items either to a Job Site or to a Customer Site.

CAM-Duct features unprecedented flexibility and integration with other applications allow easy incorporation of bar-coding, job/ part tracking, as well as costing and estimating.

CAM-Duct features include:

- Comprehensive, customizable pattern libraries.
- Customizable pattern views including 3-D and auto-rotating
- Full Windows printer support including color.
- 'Quick Takeoff' Tools for rapid job building/ Item Entry.
- Tie in to **TRACK-It** Bar-code option for part/ job tracking.
- Unrivalled automatic and manual nesting combining speed and minimal material utilization/ cost.
- Pre-Loaded with Industry Standard SMACNA-Based Specifications, seams, connectors and notching with unlimited editing and customizability.
- Customizable reports and label layout formats.
- Seamless integration with **FAB-MEP**, **CAD-Duct** Drafting/ Detailing for automated Fabrication Processing and **EST-Duct** Estimating for accurate job costing.
- Support for virtually any cutting table (Advance Cutting, MultiCAM, Lockformer, laser, etc.)
- Comprehensive cutting table definitions provides highly productive cutting.
- Powerful Full 2-D CAD for manual part layout.



TECHNICAL SALES INTERNATIONAL

Project: 1 (866) 493-6337 **Qty:** 1

Tap Back Wrapper

86.233 x 20.563

C1: 24x24 TDC
 C2: 30.81x24 1in Flg Out
 C3:
 Len/Angle: 17.7 (inch) Snapl...
 1/2 Qty: 1

SA22 Gauge: 26 Weight: 10 **Area: 2175.3** **Duct Seal**
 Notes: Date: 3/10/2005

Job Info: **Section Info:**

St Josephs Hospital M-1 **Area 2**

Scan Code

* St Josephs Hospital M - 1 / 4 5 a *

