



TECHNICAL SALES INTERNATIONAL

the next generation of software

CAD-Mech is an industry standard, Autodesk® add-on that brings intelligent, 3D Mechanical Piping Fittings into the Design/ Build Environment, programmed with True ARX Technology for AutoCAD and AutoCAD MEP 2007, 2008, 2009, 2010, 2011 (both 32-bit and 64-bit).

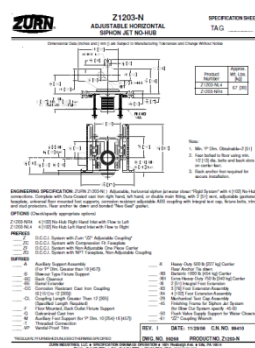
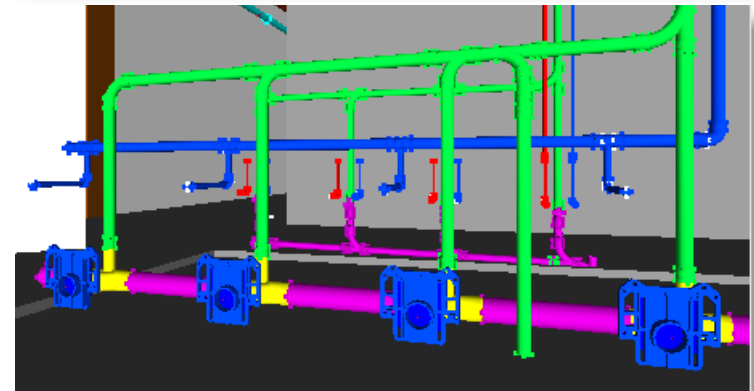
CAD-Mech is a detailer's tool that integrates directly with AutoCAD®, and AutoCAD MEP®. With real manufacturer's data content provided by *Building-Data.net* and sponsored by manufacturers such as Victaulic® and Viega®. Building-Data.net managed content ensures accurate, rich BIM data for pre-fabrication. All CAD-Mech items include Hyper-links to manufacturer's PDF specification sheets which are active in Navisworks, AutoCAD® or AutoCAD MEP®. Additionally, all content includes labor and material pricing that the **EST-Mech** Estimating module can price directly in the drawing file. Designers can automatically change pipe sizes or insulation thickness on the fly and re-price in the model.

CAD-Mech offers seamless integration with our HVAC Detailing software, **CAD-Duct**, making use of the same network-able database. **CAD-Mech** generates detailed reports for shipping, purchasing, and fabrication. With the Auto-spooling feature, Detailers can create fabrication drawings with automatic Bill of Material generation for each ISO drawing. Being Autodesk® DWG based, architectural drawings made using AutoCAD or AutoCAD MEP, can be directly opened and then 'overlaid' with **CAD-Mech**. All 3D 'collisions' and 'conflicts' can automatically be identified.

CAD-Mech Features include:

- AutoCAD® DWG, AutoCAD® MEP DWG, IFC, IFCXML, IFCxml.zip and NavisWorks® compatible.
- Auto-route sloped pipe and rolling offsets.
- Auto Collision checking Steel and **CAD-Duct**
- Advanced 'Annotate' capabilities to easily document item size, length and elevation etc.
- Bar code and track spools with **Track-it** software.
- Optional **JOB-Site Solutions** Trimble MEP output interface for Hanger, sleeves and other points.

CAD-Mech



Item No.	Item Name	Size #1	Length	Material	Qty	Material P.O. Requested
01	Pipe, Sch 40, 1/2" dia. A53 B36	1-00	46.00	Iron	Yes	Yes
02	Pipe, Sch 40, 1/2" dia. A53 B36	1-00	46.00	Iron	Yes	Yes
03	Flt. Rod, 1/2" dia. A53 B36	4-00	8.12	Iron	Yes	Yes
04	Pipe, Sch 40, 1/2" dia. A53 B36	1-00	22.00	Iron	Yes	Yes
05	Flt. Rod, 1/2" dia. A53 B36	2-00	7.07	Iron	Yes	Yes
06	Conn. Bolt	4-00	4.00	Iron	Yes	Yes

MATERIAL: Sch 40 A53 ERW	Technical Sales Int.	JOB NAME: INTEL SC11
AREA: CLASS 150W	655 Round Bay, Box E # 204	JOB NUMBER: 4577-01
AREA/FLOOR: 1ST FLOOR	Round Bay, TX 76081	DATE ORDERED:
DETAILER: JFR	PO: (817) 443-5377	DATE PROVIDED:
FITTING PAGE:	FAX: (817) 443-5378	NOTE:
CAD:		DATE: 05/11