



TECHNICAL SALES INTERNATIONAL

the next generation of software

CAD-Elec

CAD-Elec is an industry standard, Autodesk® add-on that brings intelligent, 3-dimensional Electrical Components and Fittings into the Design/ Build Environment, programmed with True ARX Technology for AutoCAD and AutoCAD MEP 2007-2011 (both 32-bit and 64-bit).

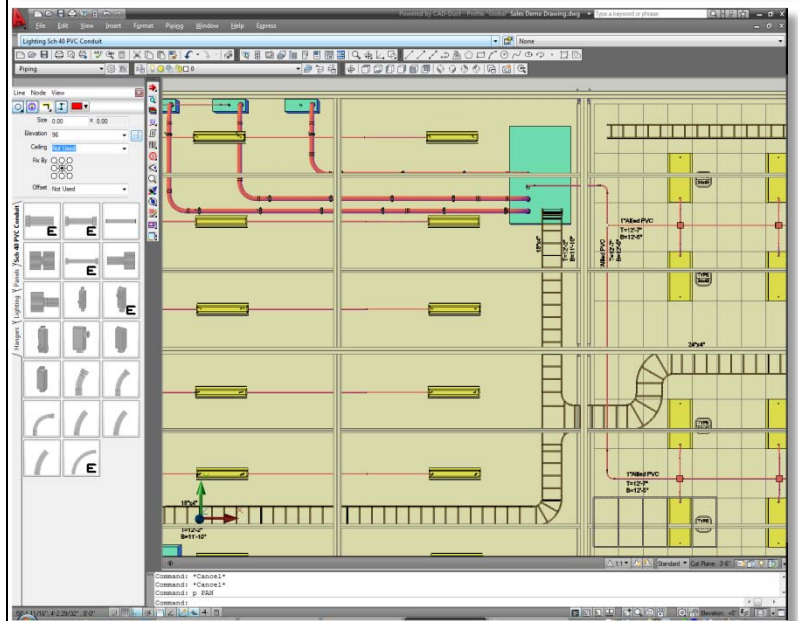
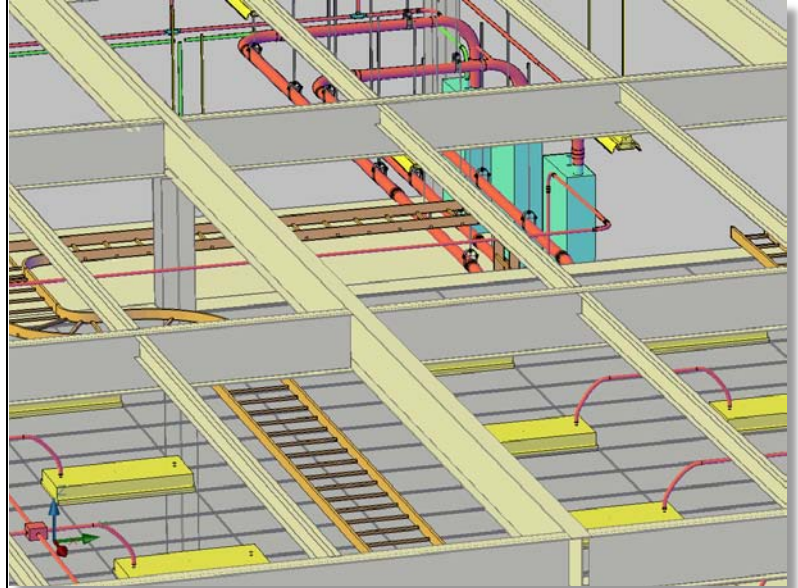
CAD-Elec is a detailer's tool that integrates directly with AutoCAD®, AutoCAD MEP® and **CAD-MEP**. Through the *Design-Line* Tool, **CAD-Elec** can reference and re-draw AutoCAD MEP *.DWG files to **CAD-Elec** Electrical Services meeting company standards, which saves time when working with drawings in Consulting Engineer's AutoCAD MEP files or in-house Design/ Build drawings.

CAD-Elec offers seamless integration with our HVAC and Mechanical Detailing software packages, **CAD-Duct** and **CAD-Mech**, making use of the same network-able database.

CAD-Elec generates detailed reports for shipping, purchasing, and fabrication. With the Auto-spooling feature, Detailers can create fabrication drawings with automatic Bill of Material generation for each ISO drawing. Being Autodesk® based, architectural drawings made using AutoCAD or AutoCAD MEP, can be directly opened and then 'overlaid' with **CAD-Elec**. All 3D 'collisions' and 'conflicts' can automatically be identified.

CAD-Elec Features include:

- AutoCAD®, AutoCAD® MEP, IFC, IFCXML, IFCXML.zip and NavisWorks® compatible.
- Automated Drawing Tools using *Design-Line* Technology – speeding up the drawing process
- ISO assembly drawings for shop fabrication.
- Collision checking including Steel and **CAD-Duct** and **CAD-Mech** items.
- Advanced 'Annotate' capabilities to easily document item size, length and elevation etc.
- Powerful report generator produces BOMs, purchase orders, shipping lists, and cut lists.
- Optional **JOB-Site Solutions** Trimble MEP output interface for Hanger, sleeves and other points.



SPOOL BOM				
Item No	Qty	Size (Inch)	Description	Length (Inch)
1	1	4"	Sch 40 PVC Conduitt	55 1/4" (Inch)
3	1	4"	Sch 40 90° ELBOWS BxP	
2	1	4"	Coupling	



CAD-Elec
Technical Sales International

Designer: BKG
Issue Date: 1/12/2009
Rev. Date/Number:
Job Number: 123456

Customer: ABC Northwest
Spool No: E-003