

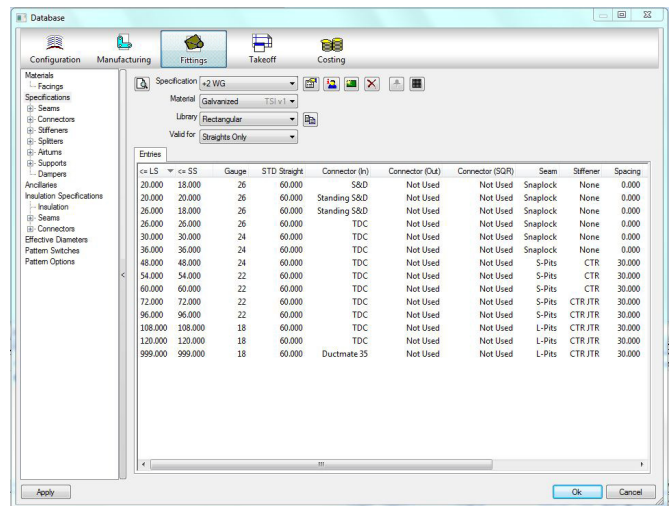
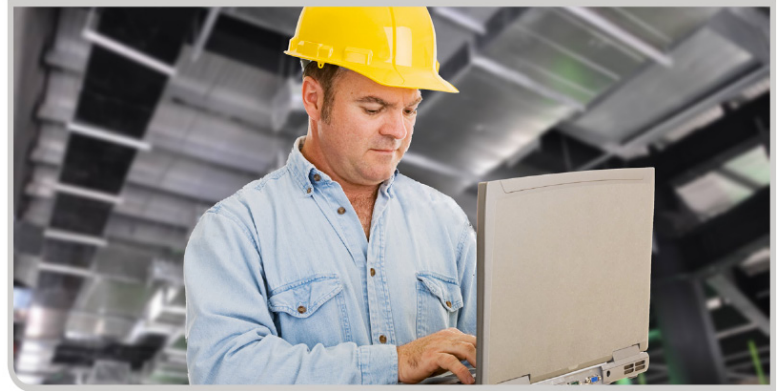


**TSI's Remote Entry** is an automated job-site takeoff solution for easily and quickly producing jobs for fabrication and estimating.

**Remote Entry** automates the old process of faxing undecipherable hand-written line items and pictures from the field to the shop. With **Remote Entry**, foremen can now quickly enter accurate fittings and straight duct at the job site and email the file to their shop production manager for processing and fabrication and to the estimating department for pricing.

- No more duplication of effort
- No more error-prone interpretations of handwriting and drawings
- Fewer mistakes—the foreman can see his fittings right on the screen for review from any angle
- Faster input from the field
- Eliminates bottlenecks of the shop manager processing and entering into production
- Consistent data flows from the field, to production processing, estimating, and then through to manufacturing equipment
- Standardized—all specifications are from your main database. No wrong seams, no radical fittings or anything out of the normal shop practices.

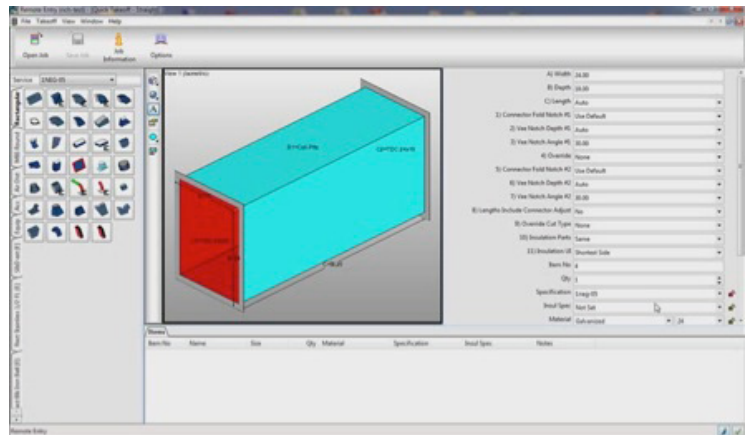
# Remote Entry



## HOW REMOTE ENTRY WORKS

Using a configured database from the manufacturer, **Remote Entry** allows installers/customers to takeoff a selection of patterns which are preset and meet the standards of the manufacturer. Specification control allows the **Remote Entry** job to be compliant with manufacturing equipment.

**Remote Entry** can be used for entering missing parts, specifying dimensional changes on-site and creating a job containing all the parts to be manufactured. These jobs are easily transferred to the manufacturer for fast production and turnaround.





# INTEGRATE INTO YOUR BUSINESS MODEL

A stand-alone, copy protected program with template files of the parts to be entered are all that is required at the remote site. This system is compact enough to be distributed by email or directly over the internet.

The manufacturer configures the specification for **Remote Entry**, ensuring that all required content is entered onto the service. Multiple services can be provided to the **Remote Entry** user, enabling the manufacturer to 'lock' certain specifications (e.g., low, medium and high pressure duct work).

The **Remote Entry** user is then set up to be able to make any necessary amendments for the job. Using the Takeoff Screen, the user is provided the dimensions and options available, as specified by the manufacturer.

Once the user has changed any dimensions, he can regenerate the item and then accept to confirm the item to the job.

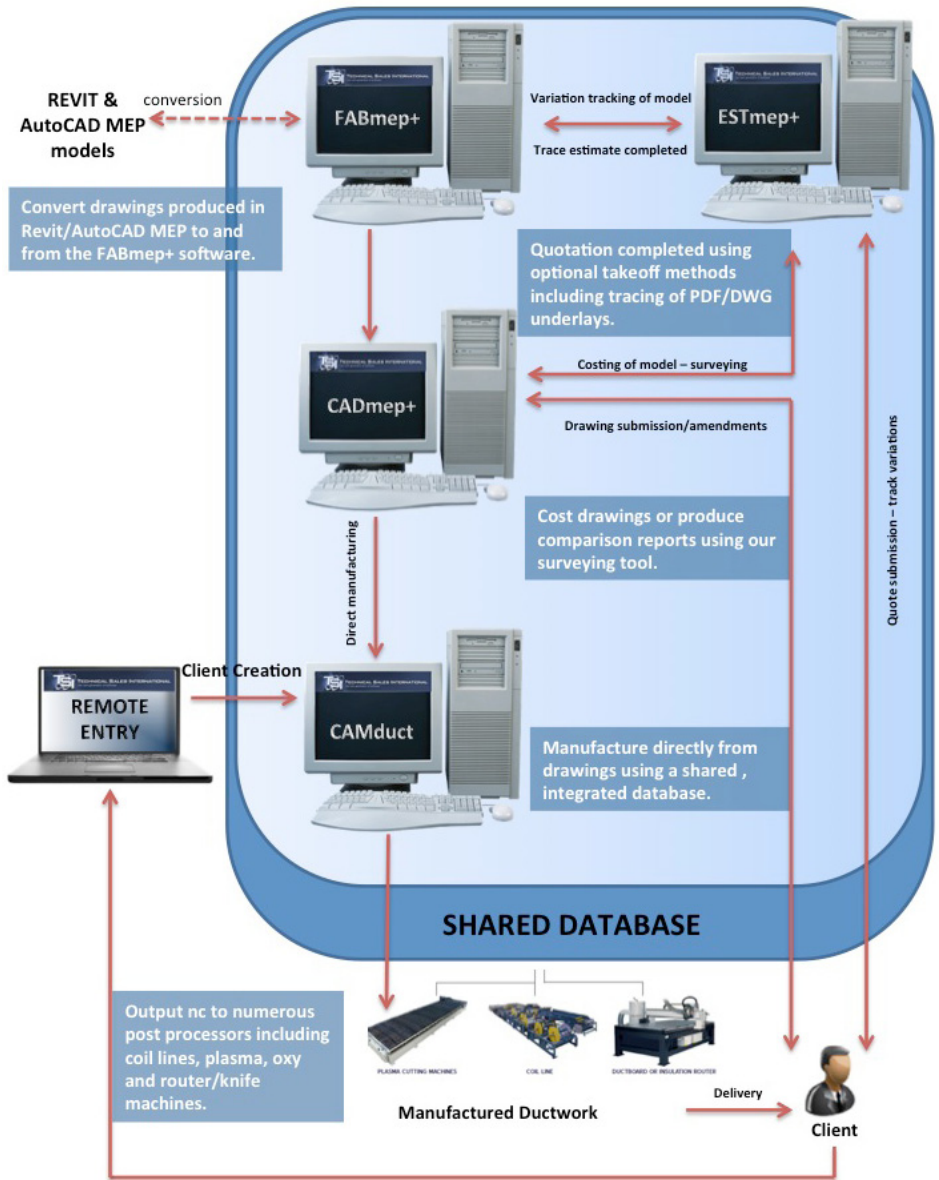
After all the requirements have been specified, they are saved and sent to the manufacturer by email or secure transfer, ready for manufacture.

**Remote Entry** can fit seamlessly into any company's current business model to provide greater efficiency gains. All TSI Software solutions are developed and programmed to be fully integrated. The shared database between applications means users can transfer models between estimating, detailing and manufacturing without the need for re-calibration.

Using **Remote Entry**, users can give installers/customers the ability to amend a job at-will in the required specification and format, making change management simple, quick and cost effective.

## WANT MORE INFORMATION?

If you want to see **Remote Entry** in action, or talk to someone directly about the benefits the solution can provide for you, call us now at 1-866-493-6337 or at 1-512-310-8428, or email us at [info@tsi-software.com](mailto:info@tsi-software.com).



TECHNICAL SALES INTERNATIONAL  
the next generation of software

8310-1 N CAPITAL OF TX HWY • SUITE 200 • AUSTIN, TX 78731 • PHONE 1.866.493.6337 • FAX 1.512.532.7400

[WWW.TSI-SOFTWARE.COM](http://WWW.TSI-SOFTWARE.COM)