



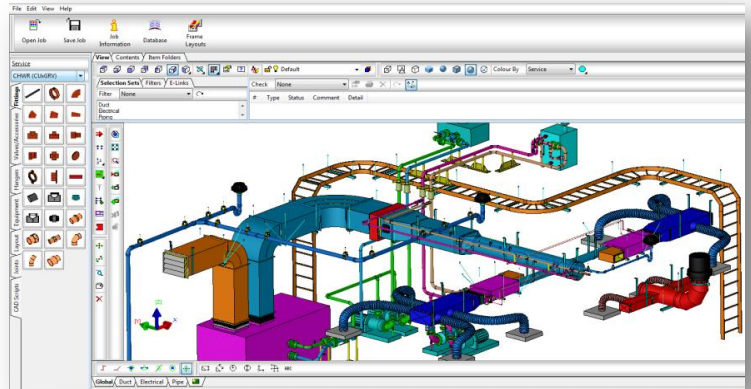
## FABmep+

**FABmep+** is a Manufacturing Building Information Modeling (BIM) tool that manages BIM files for fabrication and installation. **FABmep+** supports the complete workflow to manage BIM models created with Revit® MEP, AutoCAD® MEP, **CADmep+**, Tekla Structures, Bentley Building V8i. To manage non-manufacturing BIM files, **FABmep+** interfaces with several file types. The *Design-Line* technology processes MEP files and redraws the systems with real Manufacturing BIM data. Once in **FABmep+**, the MEP files can be costed within the integrated databases of **ESTmep+** or further designed with **CADmep+**.

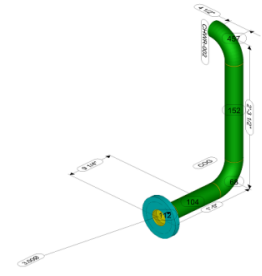
**FABmep+** also supports the workflow process of managing and extracting manufacturing and installation information contained in **FABmep+** or **CADmep+** files. **FABmep+**, which eliminates the requirement for the user to know AutoCAD, is preferred by Project Managers, Production Managers, Purchasing Managers, Shop Managers and many CAD Managers for easily extracting information required to manage projects including: *Validator* conflict reports, **JOB-Site Solutions Trimble MEP** points, purchasing materials, pre-fabricating spools, duct pickoff for **CAMduct** production, and field installation information.

**FABmep+** features include:

- Compatible with SKP, DXF, DWG, DGN, RIF, PDF, TIF, IFC, IFCXML, IFCXML.zip and BIX
- Total integration with **CAMduct** (Fabricating), **CADmep+** (Detailing) and **ESTmep+** (Estimating) in a common Database, Shop Standards and Fitting Libraries.
- Auto spooling including dimensioning
- Access to Building-Data.net Managed Content including hyper-links to specification sheets
- *Validate* model checking features
- Full MEP *Design-Line* features
- Frame layout for multi service racking
- **JOB-Site Solutions Trimble MEP** point output.

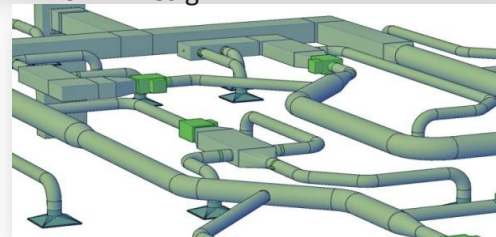


Spool CHWR-003		Bill of Materials:	
TAG	Size	Qty/Len	Name
08	3		Long Radius 90°
104	1	9.5/8" (inch)	A33 ERW Sch 40 B16 PE
112	1		Raised Face Weld Neck Flange
151	1	18.5/8" (inch)	A33 ERW Sch 40 B16 PE
457	1		Long Radius 90°
<b>Spool Weight (lbs):</b>			
Specification:		Weight:	
Piping Materials:		Piping Materials:	
<b>Weld Report:</b>			



TSI Print Date: 9/11/2010 Designer:  Required Date:

Revit® MEP 2012 - Design BIM



**FABmep+** - Manufacturing BIM

