



CAMduct

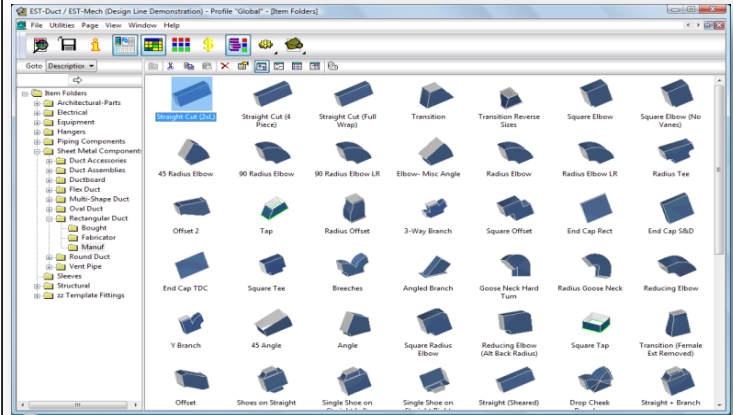
CAMduct, the world standard in HVAC CAD-CAM software is a state-of-the-art 32 and 64-bit Windows application using Open-GL technology.

CAMduct offers industry leading Fitting Libraries, including comprehensive Rectangular, Round, Oval, Fiber-Board/ Duct board Libraries, Buy-Out Item Libraries and additional Flat Pattern Libraries. The system offers a well-founded set of tools and methods for labeling, reporting and deploying of Ductwork Items either to a Job Site or to a Customer Site.

CAMduct features unprecedented flexibility and integration with other applications allowing easy incorporation of bar-coding and job/part tracking, as well as costing and estimating.

CAMduct features include:

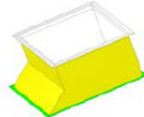
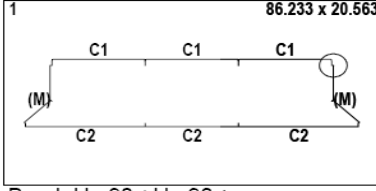
- Comprehensive, customizable pattern libraries.
- Customizable pattern views including 3-D and auto-rotating
- Full Windows printer support including color.
- 'Quick Takeoff' Tools for rapid job building/Item Entry.
- Tie in to **TRACK-It** Bar-code option for part/job tracking.
- Unrivalled automatic and manual nesting combining speed and minimal material utilization/ cost.
- Pre-Loaded with Industry Standard SMACNA-Based Specifications, seams, connectors and notching with unlimited editing and customizability.
- Customizable reports and label layout formats.
- Seamless integration with **FABmep+** and **CADmep+** Drafting/Detailing for automated Fabrication Processing and **ESTmep+** Estimating for accurate job costing.
- Support for virtually any cutting table (Advance Cutting, MultiCAM, Lockformer, laser, etc.)
- Comprehensive cutting table definitions provides highly productive cutting.
- Powerful Full 2-D CAD for manual part layout.



TECHNICAL SALES INTERNATIONAL

Project: 1 (866) 493-6337 **Qty:** 1

Tap
Back Wrapper





C1: 24x24 TDC
C2: 30.81x24 1in Flg Out
C3:
Len/Angle: 17.7 (inch) Snapl...
1/2 Qty: 1

SA22 Gauge: 26 Weight: 10 **Area: 2175.3** Duct Seal
Notes: Date: 3/10/2005

Job Info: **Section Info:**

St Josephs Hospital M-1 **Area 2**
Scan Code



* St Josephs Hospital M-1 / 45 a *

