



CADmep+ now includes all the benefits of CAD-Elec, plus multiple additional features.

CADmep+

CADmep+ (including CAD-Elec features) is an industry standard, Autodesk® add-on that brings intelligent, 3-dimensional Electrical Components and Fittings into the Design/ Build Environment, programmed with True ARX Technology for AutoCAD and AutoCAD MEP 2007-2011 (both 32-bit and 64-bit).

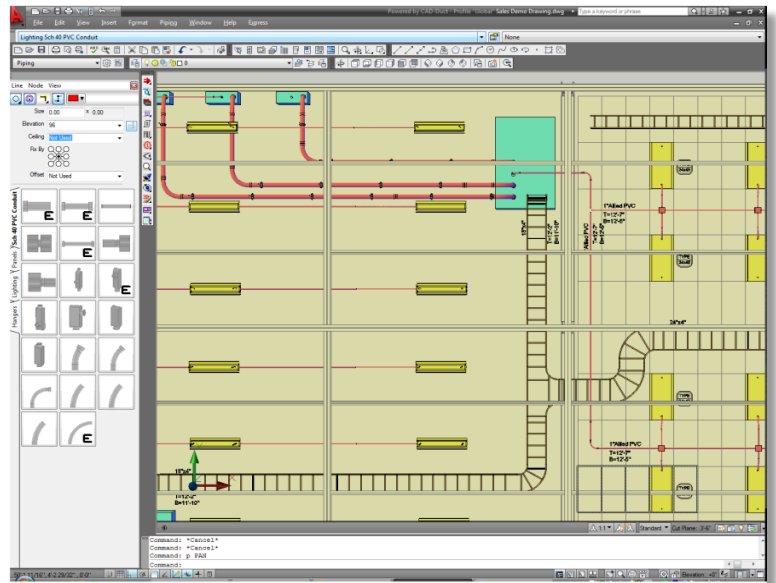
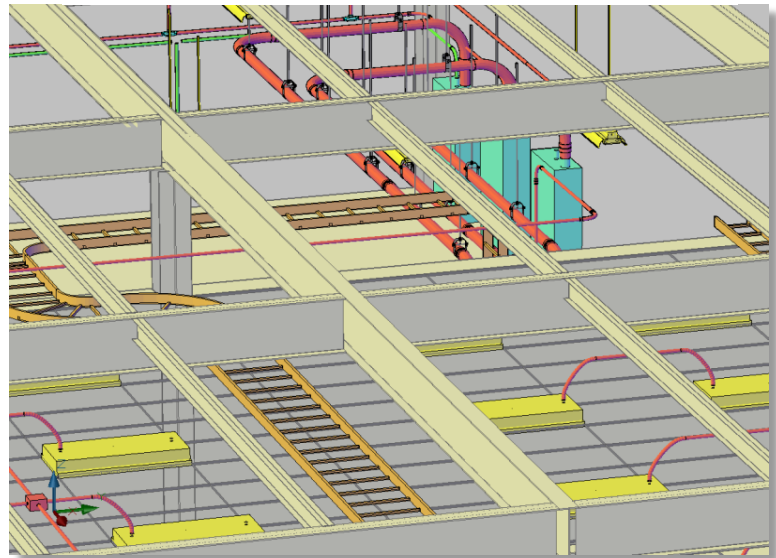
CADmep+ is a detailer's tool that integrates directly with AutoCAD® and AutoCAD MEP®. **CADmep+** can reference and re-draw AutoCAD MEP *.DWG files to **CADmep+** Electrical Services, meeting company standards and saving time when working with drawings in Consulting Engineer's AutoCAD MEP files or in-house Design/ Build drawings.

CADmep+ includes not only electrical services, but HVAC and Mechanical Detailing also, making use of the same network-able database.

CADmep+ generates detailed reports for shipping, purchasing, and fabrication. With the Auto-spooling feature, Detailers can create fabrication drawings with automatic Bill of Material generation for each ISO drawing. Architectural drawings made using AutoCAD or AutoCAD MEP, can be directly opened and then 'overlaid' with **CADmep+**. All 3D 'collisions' and 'conflicts' can automatically be identified.

CADmep+ includes the following CAD-Elec features:

- AutoCAD®, AutoCAD® MEP, IFC, IFCXML, IFCXML.zip and NavisWorks® compatible.
- Automated Drawing Tools using *Design-Line* Technology – speeding up the drawing process
- ISO assembly drawings for shop fabrication.
- Collision checking including steel, HVAC and mechanical items.
- Advanced 'Annotate' capabilities to easily document item size, length and elevation etc.
- Powerful report generator produces BOMs, purchase orders, shipping lists, and cut lists.
- **JOB-Site Solutions** Trimble MEP output interface for Hanger, sleeves and other points.



SPOOL BOM			
Item No	Qty	Size (inch)	Description
1	1	4"	Sch 40 PVC Conduitt
3	1	4"	Sch 40 90° ELBOWS BxP
2	1	4"	Coupling

E-003

CAD-Elec
Technical Sales International

Designer:	JKC
Issue Date:	1/12/2009
Rev. Count/Number:	
Job Number:	123456
Customer:	ABC Northwest
Spool No:	E-003

